

PRESSING
PRESSING
ISSUES



CALIFORNIA SOCIETY OF PRINTMAKERS

CATALOG & EXHIBITION

SUMMER 2007



California
Society of
Printmakers

PRESSING ISSUES

California Society of Printmakers

MONOTYPES

MONOPRINTS

HYBRID PRINTS

EXHIBITION CATALOG

GUALALA ARTS CENTER

July 14, 2007 - August 5, 2007

Gratitude

Gualala Arts

The California Society of Printmakers, as it nears it's centennial anniversary, has exhibited in a wide variety of venues varying from individual's homes, to major museums. Few have displayed the professionalism and none have exceeded the beauty of the Gualala Arts Center.

The California Society of Printmakers wishes to extend a debt of gratitude to the Gualala Arts Center for the opportunity to exhibit "Pressing Issues", an exhibit of monotypes, monoprints, and hybrid prints. We look forward to an exhibition literally on the cutting edge of printmaking today.

Lars Johnson
Exhibitions Chairperson
California Society of Printmakers

Juror's

Statement

I was thrilled with the opportunity to select the works for the California Society of Printmaker's exhibition, "Pressing Issues". The entries were extremely impressive and the combination of techniques represented spanned from the most basic form of printmaking to the use of digital technology.

Cosette Dudley's work, "Betty: Security Risk: Old History, Hybrid: photoetching, aquatint, and rubber stamps, focuses on the internment of Japanese-Americans during World War II. One of the images used was from her collection of photos of classmates.

Barbara Foster's combination of inkjet printing and relief printmaking not only brings two techniques together, but with some of her larger works she has also combined printmaking studios, Trillium Press in Brisbane, for the archival digital printing, and the Kala Institute, in Berkeley, for the woodcut printing.

Bonnie Boller uses clay for her plate and liquid clay (slip) as the paint for her monotypes. The works are hand printed on paper or fabric. The result is a vibrant print that resembles vintage textiles.

I selected 42 prints for the exhibition that are strong examples of hybrids, monotypes and monoprints. In some cases, content played as much of a role as the application of technique. My intention was to select a very elegant exhibition that allows for each print to be showcased with the room and importance it deserves.

Lisah Horner, Director
ACCI Gallery
(Arts and Crafts Cooperative, Inc)
Berkeley, CA

Prints

Monotypes Monoprints & Hybrid Prints

There are many kinds of original prints. Monotypes, monoprints and hybrid prints are some of the less traditional types of prints favored by many contemporary artists.

An artist makes an original print by transferring an image, called a matrix, to a sheet of paper or other support. The matrix may be created on a block of wood, a copper plate, a lithographic stone, a silk screen, or any other material from which multiple image transfers can be made. What a print is called, such as a woodcut, an etching, a lithograph, or a silk screen, depends on how the matrix was created.

The support to which the image is transferred does not have to be paper. It could be glass, clay, canvas or anything else to which the image can be transferred. Normally the medium used to transfer the image from the matrix to the support is ink, but artists have used watercolors, ceramic glazes, or other media to make the transfer.

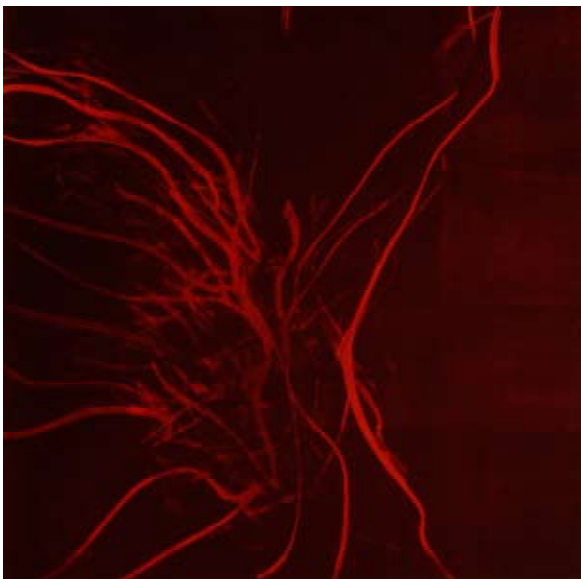
Traditionally prints have been editioned. That means that the artist makes multiple copies of the same image. Yet sometimes the artist only wants to make a single print, or wants to make prints that combine more than one printmaking technique. In that case the artist may create one of the types of prints included in this show, a monotype, a monoprint, or a hybrid print.

A monotype (sometimes called a monoprint) is a print that is not created from a matrix designed for multiple copies. Usually a monotype is made by drawing or painting an image on a sheet of Plexiglas, and then transferring the image to a piece of paper. Since the image on the Plexiglas disappears after the ink is transferred, the result is a unique print. The term monoprint is perhaps more properly used when a print created from a matrix is enhanced by direct techniques, such as painting, drawing or collage, to create a unique print. A hybrid print describes a print that combines two or more different types of printmaking, such as an etching combined with a woodcut, or a lithograph combined with a digital image. Hybrid prints may be editioned.

Barbara Milman
President
California Society of Printmakers

Contents

<i>Run, Rabbit, #2</i>	Beard
<i>Sylvester, Pugsley Kon-Kai Squabble</i>	Brokl
<i>Betty: Security Risk: Old History?</i>	Dudley
<i>March for Empire: Old History?</i>	Dudley
<i>End of the "N" I</i>	Dunne
<i>Red House Home</i>	Eneix
<i>Desert Patterns #3</i>	Fillhardt
<i>Desert Patterns #5</i>	Fillhardt
<i>Cruel Summer</i>	Fink
<i>West is West</i>	Fink
<i>Upshot: Recasting II</i>	Foster
<i>Upshot: Recastings IV</i>	Foster
<i>Whistling Roses - Nesting Cacti</i>	Hiratsuka
<i>Preachers</i>	Hiratsuka
<i>Driftwood</i>	Johnson
<i>Joystick</i>	Johnson
<i>Oakland Stack #1</i>	Kimball
<i>Oakland Stack #5</i>	Kimball
<i>Suspended Blue</i>	Lewis
<i>Twist</i>	Lewis
<i>Tango Por Los Desaparecidos De Argentina</i>	Loach
<i>Camouflage</i>	Loach
<i>La Tierra del Sol</i>	Mackaig
<i>Scryptic</i>	McCormick
<i>California Coast 702D</i>	McCormick
<i>Circles & Squares Series #011-b</i>	Milman
<i>Up Close</i>	Nilsson
<i>Parallel</i>	Orme
<i>Depend on Change</i>	Orme
<i>1912</i>	Randall Boller
<i>Dwelling</i>	Salomon
<i>Shorthand I</i>	Salomon
<i>Nocturne</i>	Salomon
<i>Infinity VI</i>	Smith-Bell
<i>Flite Through Color</i>	Tana
<i>Winter Coat</i>	Theobald
<i>Stitched Sisters</i>	Theobald-Payne
<i>Mexican Candlestick</i>	Theobald-Payne
<i>Tropic Spectrum</i>	Viramontes
<i>Homework VIII #10</i>	Wahrhaftig
<i>Tangled Woods</i>	Winer
<i>Wintry Melody</i>	Yoshizawa
	Yoshizawa



Sandra Beard
Run Rabbit #2
 Monotype 22"x22"



Robert Broki
Sylvester, Pugsley Konkai Squabble
 Monotype with Pastel Hybrid: Photoetching 38"x29"



Cosette Dudley

Betty: Security Risk: Old History?

Aquatint, Rubber Stamps 11"x16"



Cosette Dudley

March for Empire: Old History?

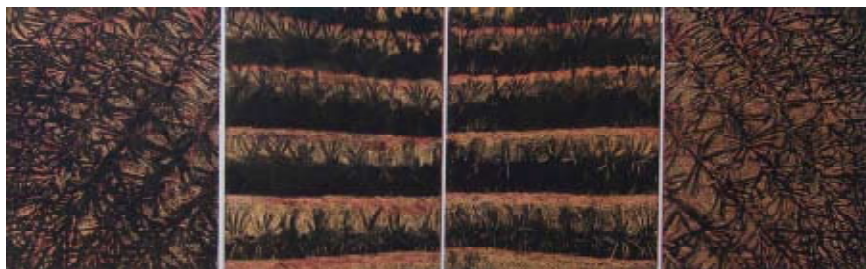
Hybrid: Lithograph and Photoetching 25 1/2"x19 1/2"



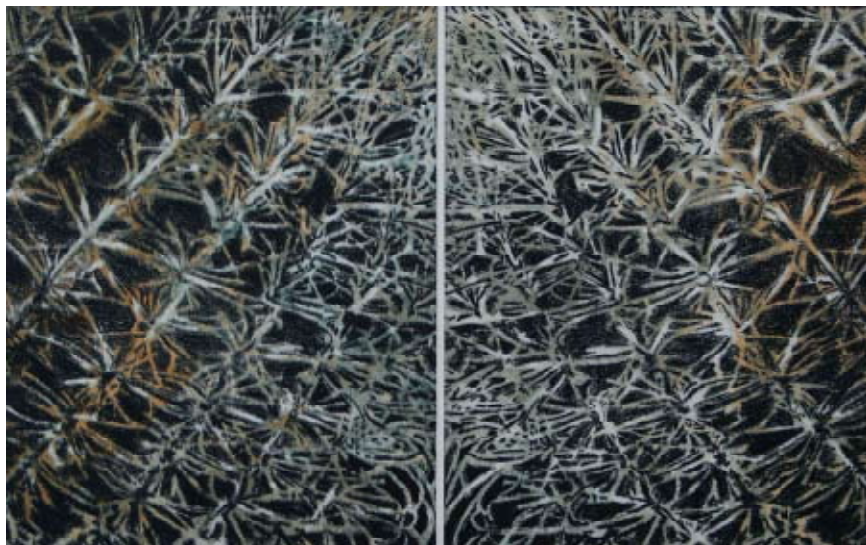
Jessica Dunne
End of the "N" /
 Monotype 20"x30"



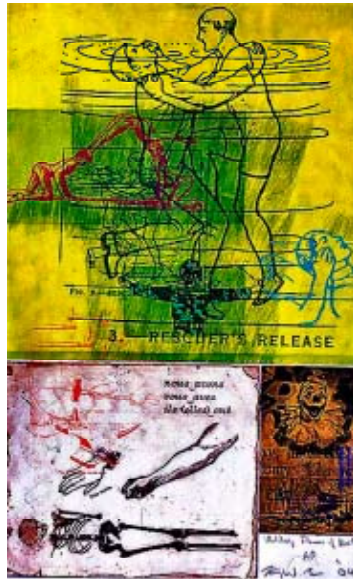
Daisy Eneix
Red House Home
 Photomontage 9"x12"



Linda Filhardt
Desert Patterns #3
 Hybrid: Monotype and Solar Etching 10"x32"



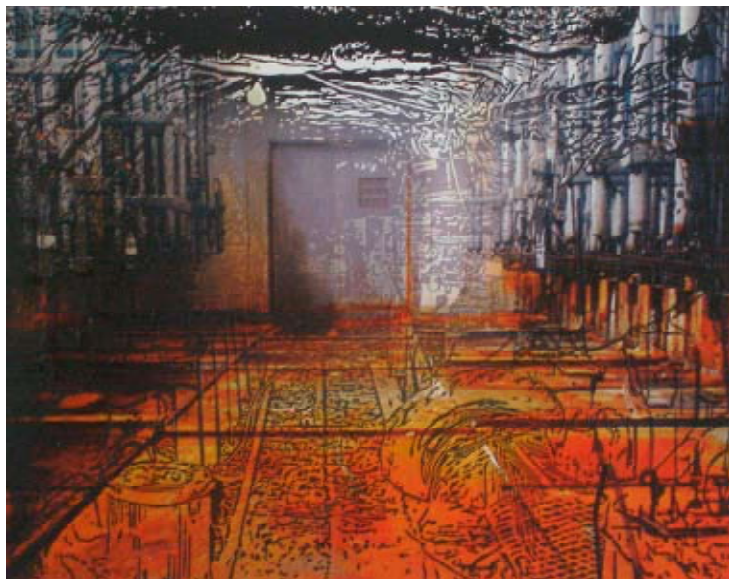
Linda Filhardt
Desert Patterns #5
 Hybrid: Monotype and Solar Etching 10"x32"



Kim Fink
Cruel Summer
 Hybrid: Etching, Serigraph 19"x28"



Kim Fink
West is West
 Hybrid: Relief, Serigraph, Chine Colle 19"x28"



Barbara Foster
Upshot Recasting II'
 Hybrid: Woodcut on Archival Digial Print 12"x15"



Barbara Foster
Upshot Recasting IV
 Hybrid: Woodcut on Archival Digial Print 12"x15"



Yuji Hiratsuka
Whistling Roses - Nesting Cacti
 Hybrid: Intaglio, Relief, Chine Colle 6"x12 1/4"



Yuji Hiratsuka
Preachers
 Hybrid: Intaglio, Relief, Chine Colle 13"x9 1/4"



Lars Johnson
Driftwood
 Hybrid: Collagraph & Linocut 18"x24"



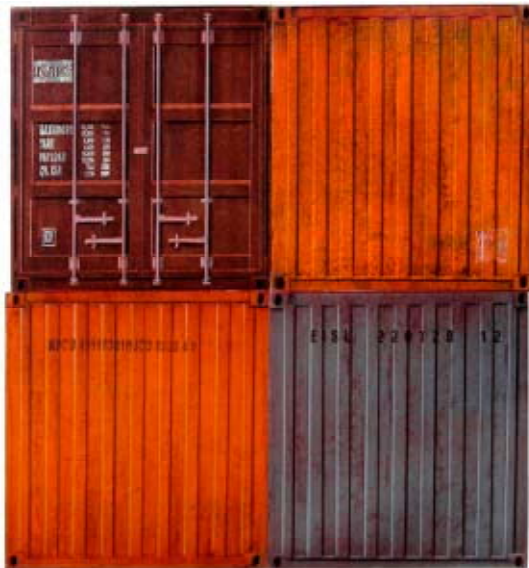
Lars Johnson
Joy Stick
 Hybrid: Collagraph w/ metal Chine Colle 20"x28"



Mike Kimball

Oakland Stack #1

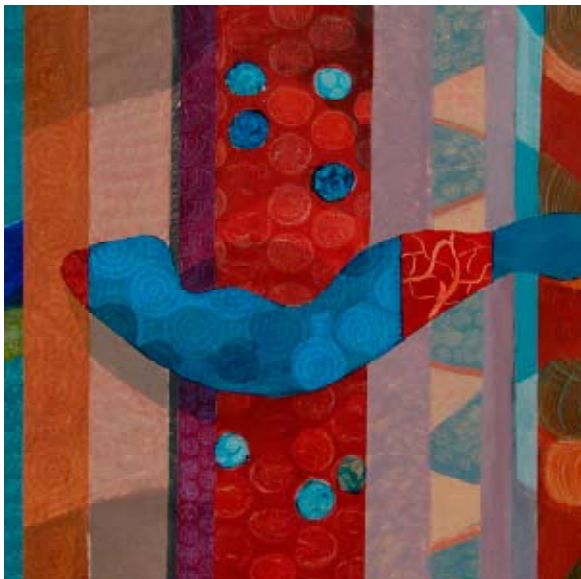
Hybrid: Etching, Drypoint, Monoprint, Lithograph, Relief 20"x21"



Mike Kimball

Oakland Stack #5

Hybrid: Etching, Drypoint, Monoprint, Lithograph, Relief 20"x21"



Sydell Lewis
Suspended Blue
 Acrylic Monotype 24"x24"



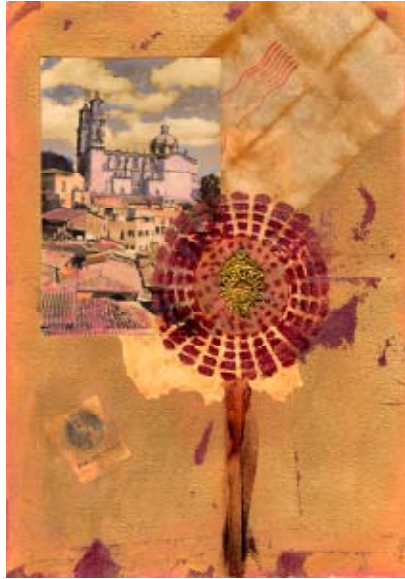
Sydell Lewis
Twist
 Acrylic Monotype 24"x24"



Roberta Loach
Tango Por Los Desaparecidos De Argentina
 Monotype 30"x22"



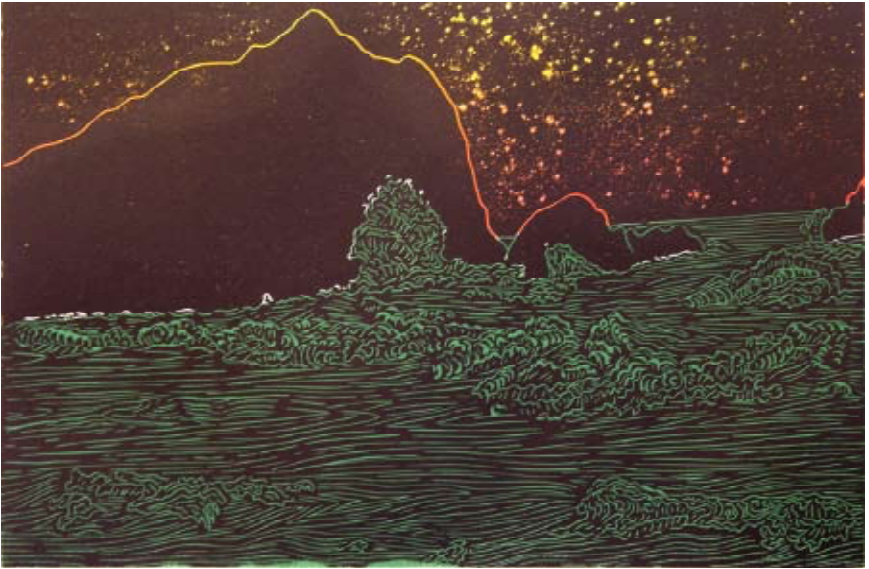
Janet Mackaig
Camouflage
 Hybrid: Drypoint & Transfer 20"x16"



Peter Leone McCormick
La Tierra del Sol
 Monotype with Mixed Media 11"x7 1/2"



Peter Leone McCormick
Scriptic
 Monotype with Mixed Media 11"x7 1/2"



Barbara Milman
California Coast 702D
 Hybrid: Monoprint & Linocut 12"x18"



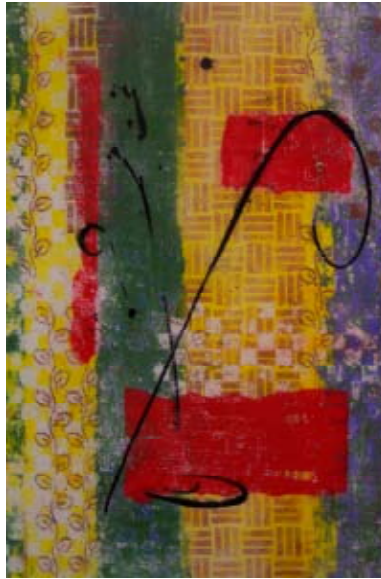
Barbara Nilsson
Circles & Squares Series #011-b
 Monoprint 15"x11 1/2"



Donna Orme
Up Close
 Monoprint 25"x19"



Donna Orme
Parallel
 Monoprint 29"x23"



Bonnie Randall Boller
Depend on Change
 Clay Monotype 22"x28"



Deborah Salomon
 1912
 Hybrid (mixed) 20"x16"



Deborah Salomon
Dwelling
 Hybrid (mixed) 18"x14"



Deborah Salomon
Shorthand I
 Hybrid (mixed) 20"x16"



Sherry Smith-Bell

Nocturne

Hybrid: Solar Etching, Transfer Drawing, Etching 11"x8"



Elizabeth Tana

Infinity VI

Monotype with Mixed Media 30"x22"



Jerry Theobald
Flite Through Color
 Hybrid: Monoprint & Linocut 29"x21"



Patricia Theobald-Payne
Stitched Sisters
 Hybrid: Intaglio & Digital 14"x18"



Patricia Theobald-Payne
Winter Coat
 Hybrid: Intaglio & Digital 14"x18"



Xavier Viramontes
Mexican Candlestick
 Monoprint 33"x24"



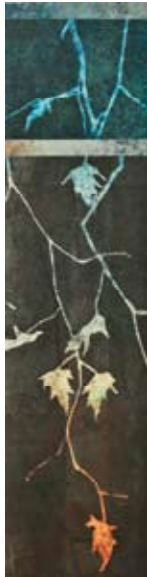
Lila Wahrhaftig
Tropic Spectrum
 Monoprint with Mixed Media 18"x14"



Barbara Winer
Homework VIII #10
 Monotype 22"x20"



Linda Yoshizawa
Tangled Woods
Monotype with Collage 22"x30"



Linda Yoshizawa
Wintry Melody
Monotype with Collage 32"x16"

Inside Back Cover to be blank or have
a message from Sus regarding GAC

Sandra Beard
Robert Brokl
Cosette Dudley
Jessica Dunne
Daisy Eneix
Linda Fillhardt
Kim Fink
Barbara Foster
Yuji Hiratsuka
Lars Johnson
Mike Kimball
Sydell Lewis
Roberta Loach
Janet Mackaig
Peter Leone McCormick
Barbara Milman
Barbara Nilsson
Donna Orme
Bonnie Randall Boller
Deborah Salomon
Sherry Smith-Bell
Elizabeth Tana
Jerry Theobald
Patricia Theobald-Payne
Xavier Viramontes
Lila Wahrhaftig
Barbara Winer
Linda Yoshizawa

